

NASCC:  
THE STEEL CONFERENCE

---

# What's New in the Realm of Safety

PDH #48624

Session Code: R5

Room 260

# Presentation Outline

Learning Outcome

Introduction to NMAPC and TAUC

OSHA Update

Current Safety Trends/Initiatives

Questions/Discussion

Assessment Questions

## Learning Outcome

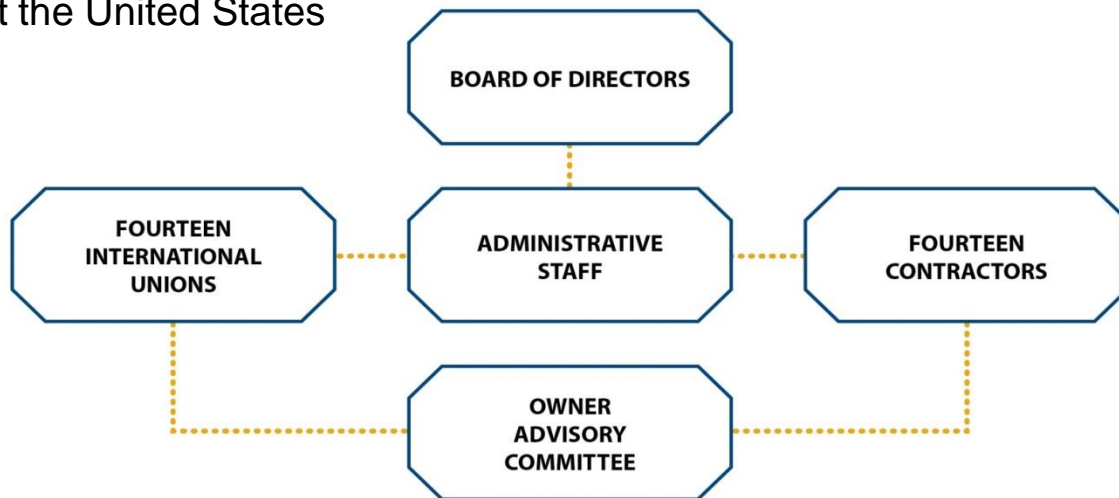
Update attendees on latest OSHA regulatory changes.

Address attendees OSHA-related questions.

Provide necessary information and take home value that will help fabricators and erectors be in compliance with OSHA regulations and leading practices in safety.

# NMAPC at a Glance

- The NMAPC is an incorporated, joint labor-management committee that negotiates, interprets and administers the National Maintenance Agreements (NMAs)
- The NMAs are 14 individual collective bargaining agreements that are 99.9% similar
- The NMAs are used by 14 International Unions and more than 2,000 contractors throughout the United States



# A Tripartite Approach to Success



**NMAPC TRIPARTITE**



**CONTRACTORS**



**UNIONS**



**OWNERS**

**Maintain Valuable  
Industrial Relationships  
Interpret and Mold NMA  
Labor Section**

# NMA Clients

## Owner Advisory Committee

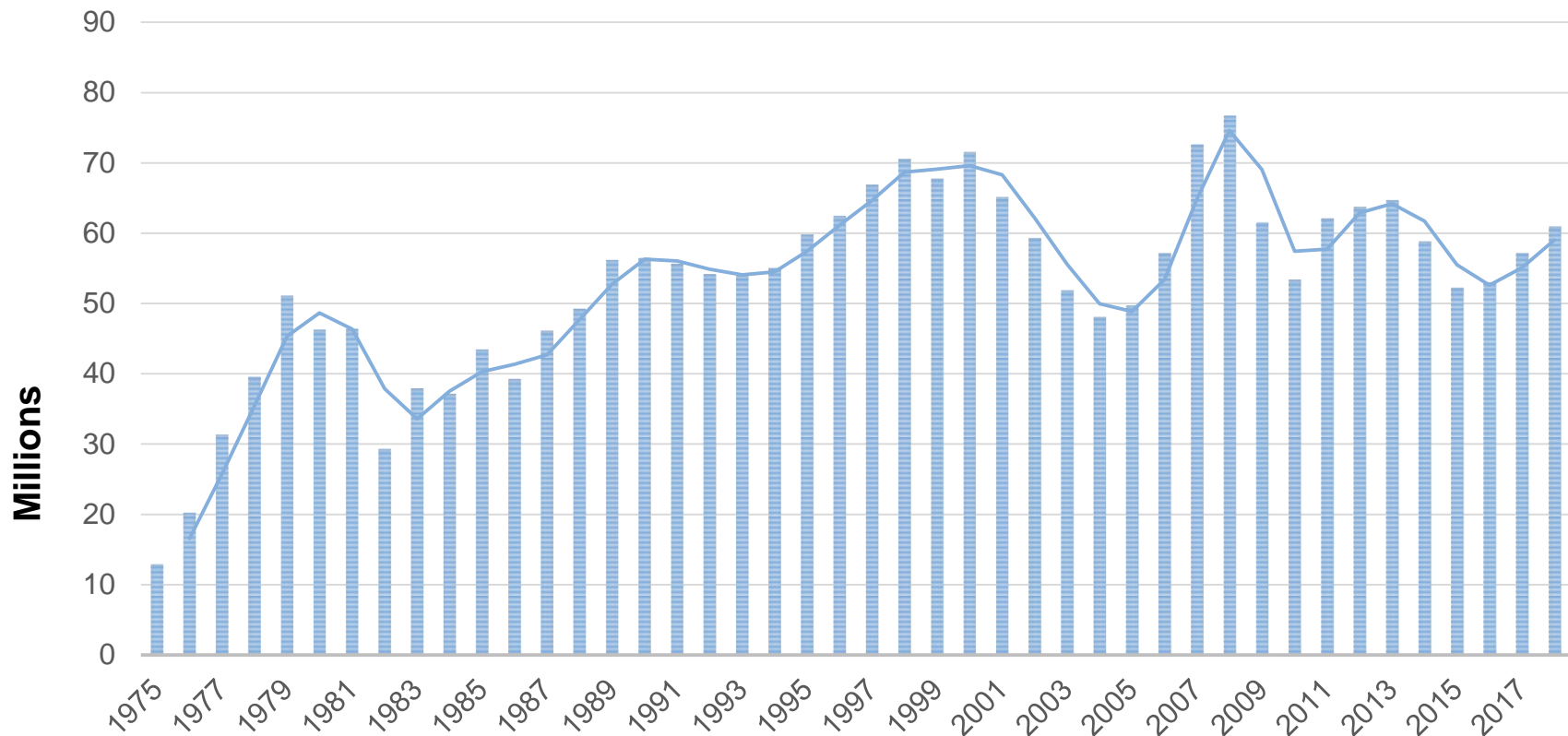
Consistent Work Opportunities



United States Steel



# Total NMA Work Hours



# 2017 v. 2018

## Top Work Hour States

### 2017 Top 10 Work Hour States

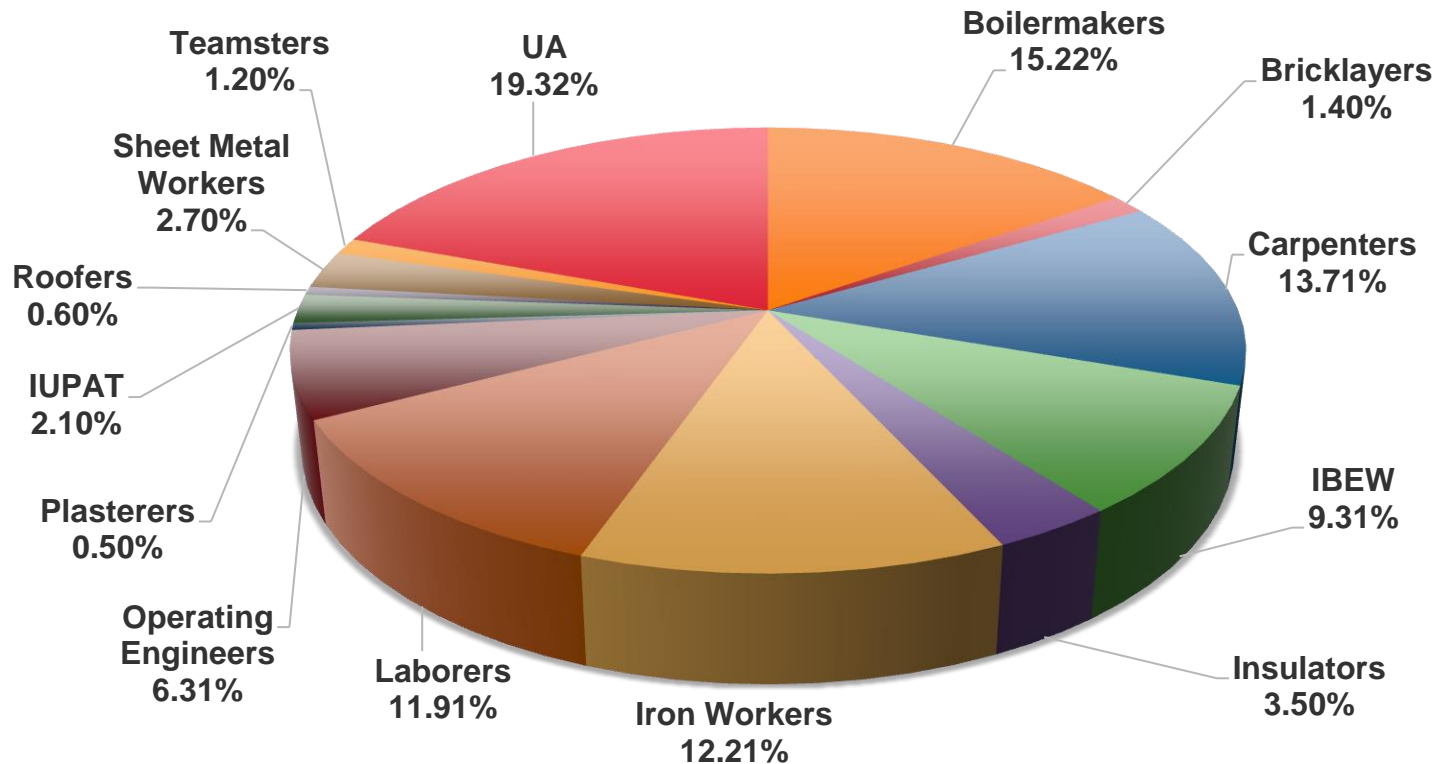
Indiana	10,354,552
Michigan	8,130,934
Ohio	7,509,125
Pennsylvania	4,903,045
Illinois	4,344,136
West Virginia	3,843,486
Kentucky	2,428,445
California	1,978,536
Missouri	1,568,974
North Dakota	1,210,717

### 2018 Top 10 Work Hour States\*

Michigan	10,433,421
Indiana	9,804,554
Ohio	8,373,424
Illinois	4,483,277
Pennsylvania	4,097,124
West Virginia	3,781,389
Iowa	2,963,547
Kentucky	2,269,269
Wisconsin	2,026,026
Missouri	1,989,282

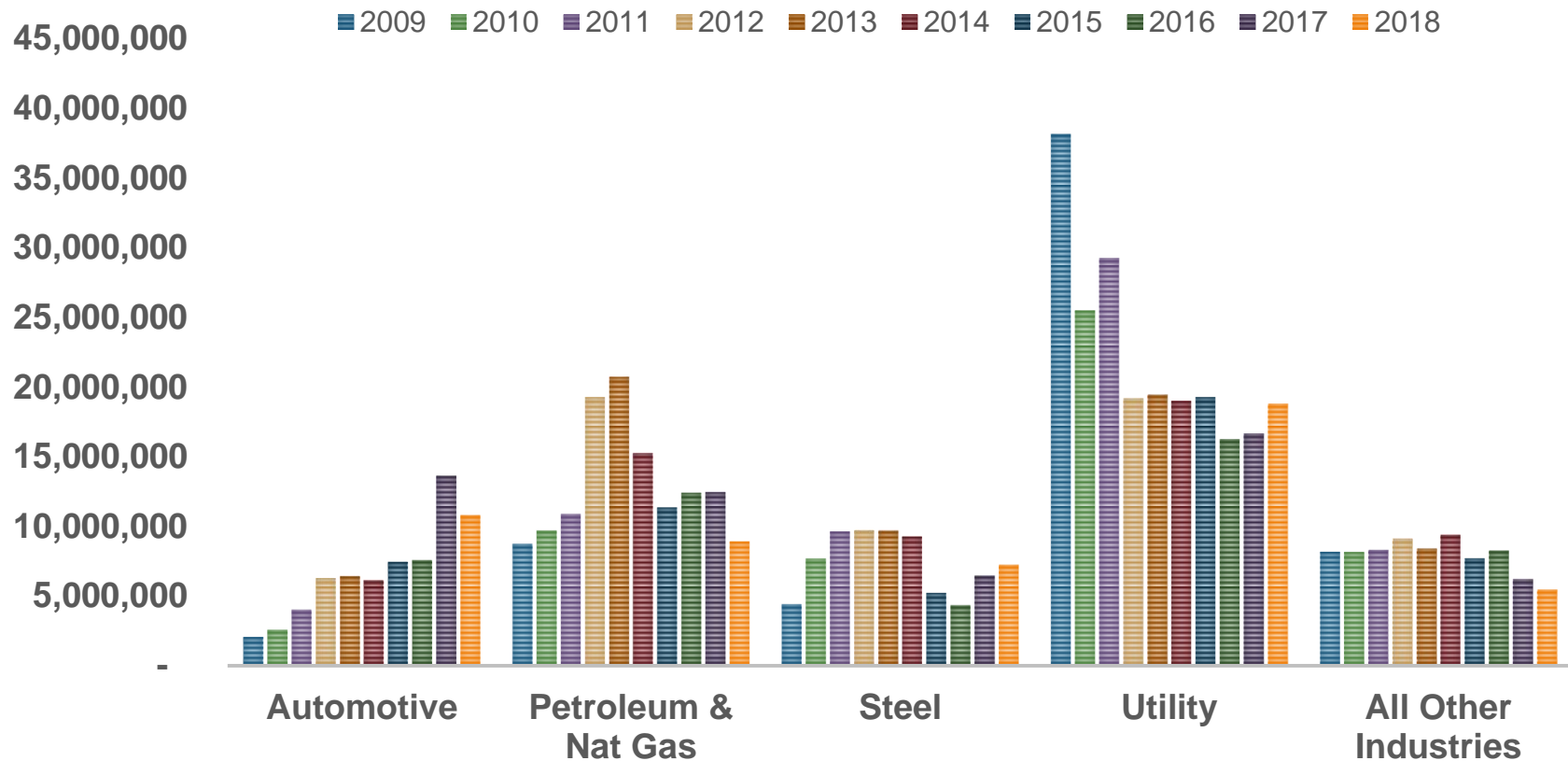


# Total NMAPC Work Hours by Craft



# NMAPC Work Hours by Industry

## 2009-2018



# Zero Injury Safety Awards



Over **27 Million** Zero Injury Hours & **133 Tripartite Teams** Recognized for Work Performed in 2017

More Than **255 Million** Total Zero Injury Hours Recognized Under ZISA Since 2000

[www.ZISA.org](http://www.ZISA.org)

# The Association of Union Constructors

Thomas J. Reynolds Safety Awards

Environmental Health and Safety Committee

Strategic Alliance w/NACBE

OSHA Liaison

Advisory Committee on Construction Safety and Health (ACCSH)

Drug Free Workplace Alliance

ANSI A10 ASC

Building Trades Safety Committee

NORA Construction Sector Council

IMPACT Safety & Health Roundtable



## Assessment Question

Name one industry served by the NMAPC and TAUC.

## Assessment Question

Name one industry served by the NMAPC and TAUC.

Automotive

Petroleum and Natural Gas

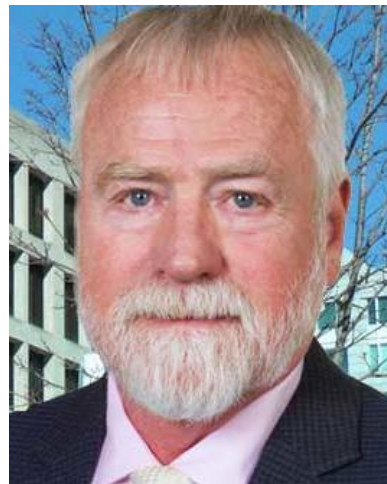
STEEL!

Utility

# OSHA Leadership

Scott Mugno nomination for Assistant Secretary of Labor for OSHA

Current interim Deputy Assistant Secretary is Loren Sweatt  
Opening for Director of Directorate of Construction



# Increased OSHA Penalties

2018 Penalty Levels		2019 Penalty Levels	
Serious	\$12,934	Serious	\$13,260
Other than Serious	\$12,934	Other than Serious	\$13,260
Posting Requirements	\$12,934	Posting Requirements	\$13,260
Repeat	\$129,336	Repeat	\$132,598
Willful	\$129,336	Willful	\$132,598
Failure to Abate	\$12,934	Failure to Abate	\$13,260
Per day beyond the abatement date		Per day beyond the abatement date	



## Recordkeeping/Anti-Retaliation

Employers of 250 or More, to protect worker privacy...

OSHA Not Collecting 300 and 301 Logs

300A Log for 2018 had to be submitted by March 2, 2019

[October 11, 2018 Memo on Anti-Retaliation](#)

Incentive Programs and Post Incident Drug Testing  
Violation if punishes employee for reporting a work-related injury/illness rather than promoting safety/health

# OSHA Beryllium Standard

Action Level 0.1 micrograms per cubic meter of air ( $\mu\text{g}/\text{m}^3$ )  
calculated as an 8-hour time-weighted average (TWA)

Permissible Exposure Limit of 0.2  $\mu\text{g}/\text{m}^3$  calculated as an  
8-hour TWA

STEL of 2.0  $\mu\text{g}/\text{m}^3$  - 15 minutes

# OSHA Beryllium Standard

## December 11, 2018 Enforcement Memo

May 11, 2018, OSHA began enforcing the PELs in the general industry, construction, and shipyard standards, and the general industry standard's provisions for exposure assessment, respiratory protection, medical surveillance, and medical removal. On December 12, 2018, OSHA will begin enforcing the general industry standard's provisions for beryllium work areas and regulated areas, written exposure control plan, personal protective clothing and equipment, hygiene areas and practices, housekeeping, communication of hazards, and recordkeeping. OSHA will begin enforcing the general industry requirements for change rooms and showers on March 11, 2019, and general industry requirements for engineering controls on March 10, 2020. Additionally, as stated above, unless it provides notice otherwise, OSHA will only enforce the PELs in the construction and shipyard standards.

# OSHA Silica Standard

Action Level of airborne respirable Crystalline Silica of 25 ug/m<sup>3</sup> as calculated over an 8 hour Time Weighted Average (TWA)

Permissible Exposure Limit of airborne concentration of respirable Crystalline Silica in excess of 50 ug/m<sup>3</sup> over an 8 hour Time Weighted Average (TWA)

Table 1 for construction

Resources: [OSHA](#), [CPWR Silica-Safe](#)



# OSHA Drone Inspections

In 2018, OSHA began using drone aircraft for worksite inspections

OSHA must obtain companies' consent to search worksites through drones

OSHA may use drones to expand scope of investigations

[ASSP Article on OSHA Drone Inspection Policy](#)

# OSHA Enforcement and Outreach

Trenching/Excavation Initiative and NEP

Falls Campaign (May 6 – 10, 2019)

Plan

Provide

Train

Safe + Sound Week (August 12 – 18, 2019)

## Assessment Question

Did OSHA penalties increase or decrease for 2019?



## Assessment Question

Did OSHA penalties increase or decrease for 2019?

A: Increase

# Current Safety Trends/Initiatives

Leading Edge/Sharp Edge Fall Protection

Opioids in the Construction Workforce

Construction Industry Alliance for Suicide Prevention

Educational Gaming

Harness Hero

Construction Hand Signals

Lift Coach: Plan Your Lift/Route

Excavators, Cranes & more



## Assessment Question

True/False: A current trend in the construction industry is the use of fall protection in leading edge/sharp edge situations.

## Assessment Question

True/False: A current trend in the construction industry is the use of fall protection in leading edge/sharp edge situations.

A. True

# Questions/Discussion

# Thank you!



Wayne J. Creasap II  
Senior Director of Environmental Health and Safety  
TAUC/NMAPC, Inc.

[wcreasap@tauc.org](mailto:wcreasap@tauc.org)

703-524-3336 ext. 123



PDH code

PDH #48624

Rate this session and claim  
PDH credit on The Steel Conference  
mobile app, brought to you by:



**AUTODESK.**